

# TRAINING OF FARMERS, TRANSPORTERS AND SLAUGHTERHOUSE WORKERS

**Mateus Paranhos da Costa**  
Department of Animal Science, Faculty of Agriculture and Veterinary Sciences,  
São Paulo State University, Jaboticabal-SP, Brazil.  
(mpcosta@fcav.unesp.br)

Grupo de Estudos e Pesquisas em Etologia e Ecologia Animal

## BEEF CATTLE WELFARE PROGRAM

**OCORRÊNCIA COMPORTAMENTAL (%)**

RAÇA	CONVENCIONAL (%)	RACIONAL (%)
SIQUE NOROCCIDENTAL	~15	~10
GIETA	~20	~10
PIGA	~10	~10

## CATTLE HANDLING

- Normal behaviour
- Learning processes

↓

- Human-cattle interactions
- The daily routine in beef farm – a good routine

↓

### RATIONAL HANDLING (GOOD PRACTICES OF HANDLING) thoughtful action

## BEEF CATTLE WELFARE PROGRAM

### Training livestock people

Developing new facilities and equipments
Auditing

Process characterization (e.g. loading, unloading, driving, stunning)

Similar strategies are applied for Dairy Cattle and Pigs

## LIVESTOCK PRODUCTION: ADDRESSING THE NEEDS OF PEOPLE AND ANIMALS

↓

### KNOWLEDGE PLANNING

↓

### RISK ASSESSMENT

↓

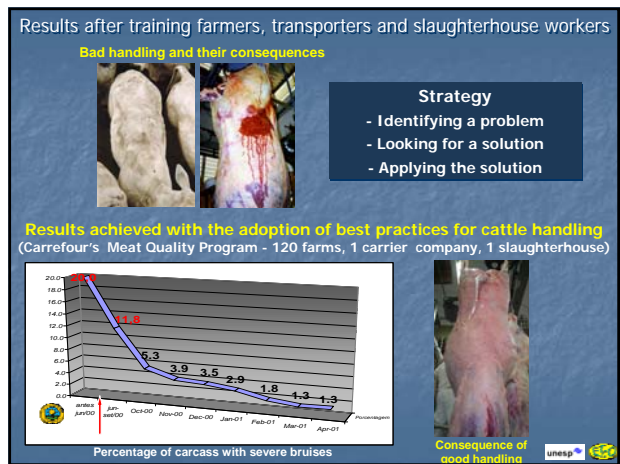
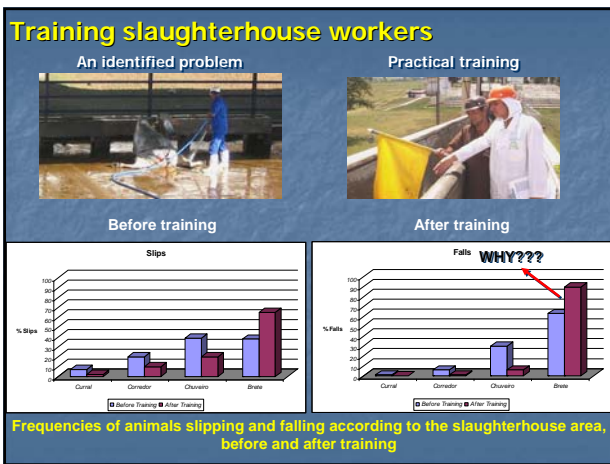
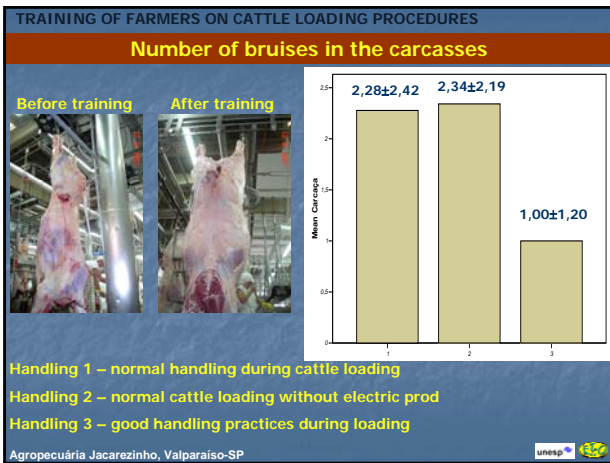
### PROCESS CONTROL

## PIG PRE-SLAUGHTER PROCESSES

Preparing for loading
Loading

Transporting
Unloading

Driving to stun position

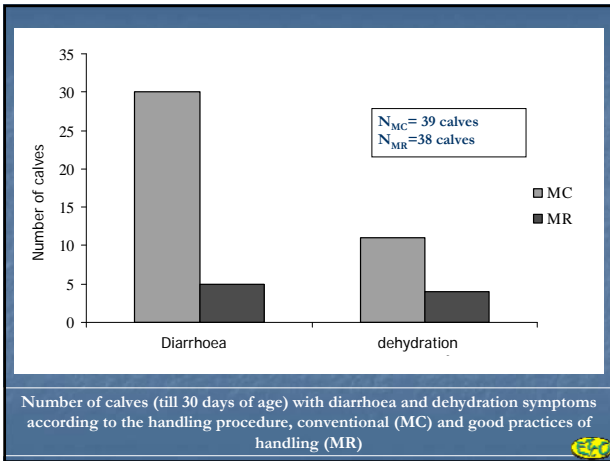
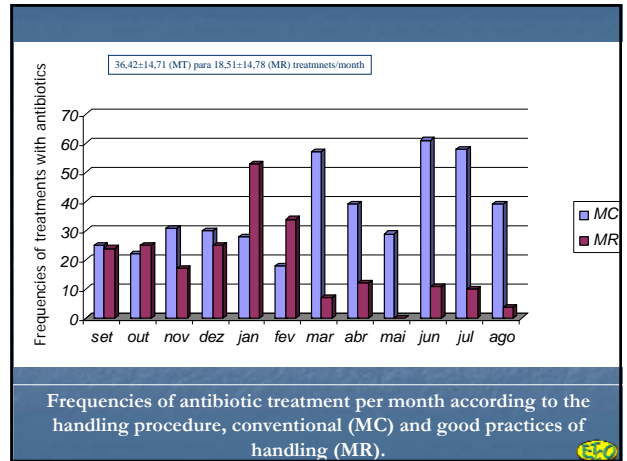
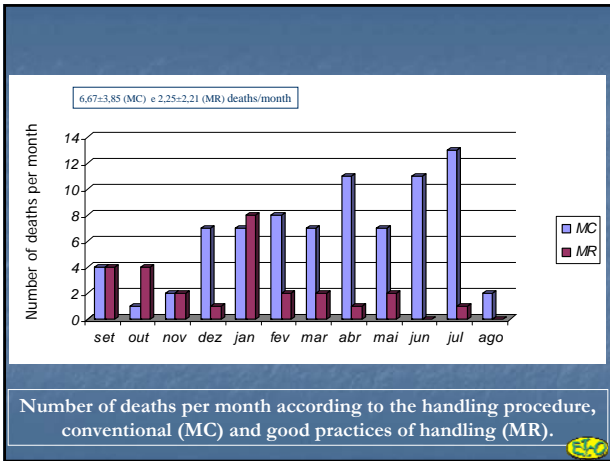


e-book  
[www.grupoetco.org.br](http://www.grupoetco.org.br)

### BEST PRACTICES FOR DAIRY CALVES HANDLING

(Silva et al., 2007)

- Physical contact
- Suckling opportunity
- Opportunities for social interactions and play
- Progressive weaning



GOOD SOLUTIONS ARE AVAILABLE

```

    graph TD
      A[KNOWLEDGE] --> B[Training  
Planning and Organization  
People engagement]
      B --> C[Better productivity  
Better labour conditions  
Better quality of life]
      C --> D[FOR HUMANS AND ANIMALS]
  
```

FOR HUMANS AND ANIMALS

**FARM ANIMAL WELFARE IN BRAZIL**

This is a good time to set up technical and educational projects to improve the conditions of farm animal handling and transport.

The Brazilian government, farmers and industries are interested in the development of strategies to improve the welfare of farm animals.

We must do it in a practical way: identifying the problems (critical points of control) and developing practical solutions to solve them

unesp

WWW.GRUPOETCO.ORG.BR

Thank you  
Mateus (mpcosta@fcav.unesp.br)

unesp