

The live export trade

Cattle & Sheep

International Live Cattle Trade

- Australia & Indonesia***
- South Asia***
- Southeast Asia***
- East Africa & Middle East***
- Brazil & Lebanon***



Main issues in the Australia-Indonesia trade

- ***heat stress in European cattle breeds***
- ***slaughter without stunning***



0028690

0038688

0038688

0038688

0038688

0038688



	<i>Haryana Cattle</i>	<i>Water Buffalo</i>	<i>P<</i>
Number of animals	368	192	
SKIN INJURIES			
% abrasions	62	95	0.05
% lacerations	32	57	0.05
% penetration	4	3	
% swellings	5	15	0.05
% old scars	60	32	0.05

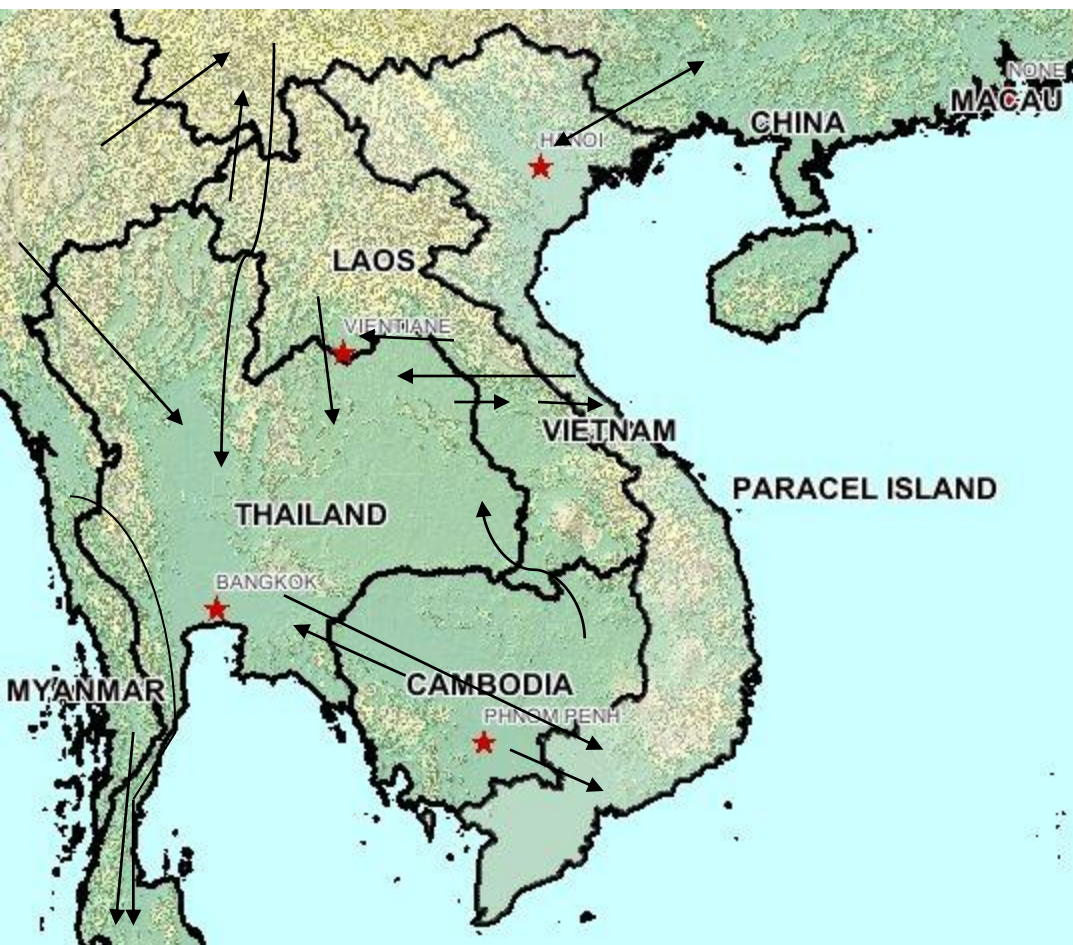


	<i>Haryana Cattle</i>	<i>Water buffalo</i>	<i>P<</i>
Number of animals	199	256	
% open-mouth panting	8	29	0.001
% drooling	14	56	0.001
% tongue protrusion	5	27	0.001
Skin temperature in sun °C ± se	38.9 ± 0.2	40.8 ± 0.1	0.001
Skin temperature in shade °C ± se	36.9 ± 0.1	38.1 ± 0.1	0.001
Rectal temperature °C ± se	38.3 ± 0.03	39.5 ± 0.04	0.001
Respiratory rate bpm	43	96	0.001

**How would you assess
metabolic depletion in these animals
at the end of their journey ?**

Main issues in the South Asian trade

- ***restriction on transport during daytime – long journeys***
- ***high stocking density – problems with downer cattle***
- ***poor vehicle design contributing to injuries***
- ***poor handling methods***
- ***metabolic depletion at the end of the journey***
- ***heat stress at markets – especially in water buffalo***



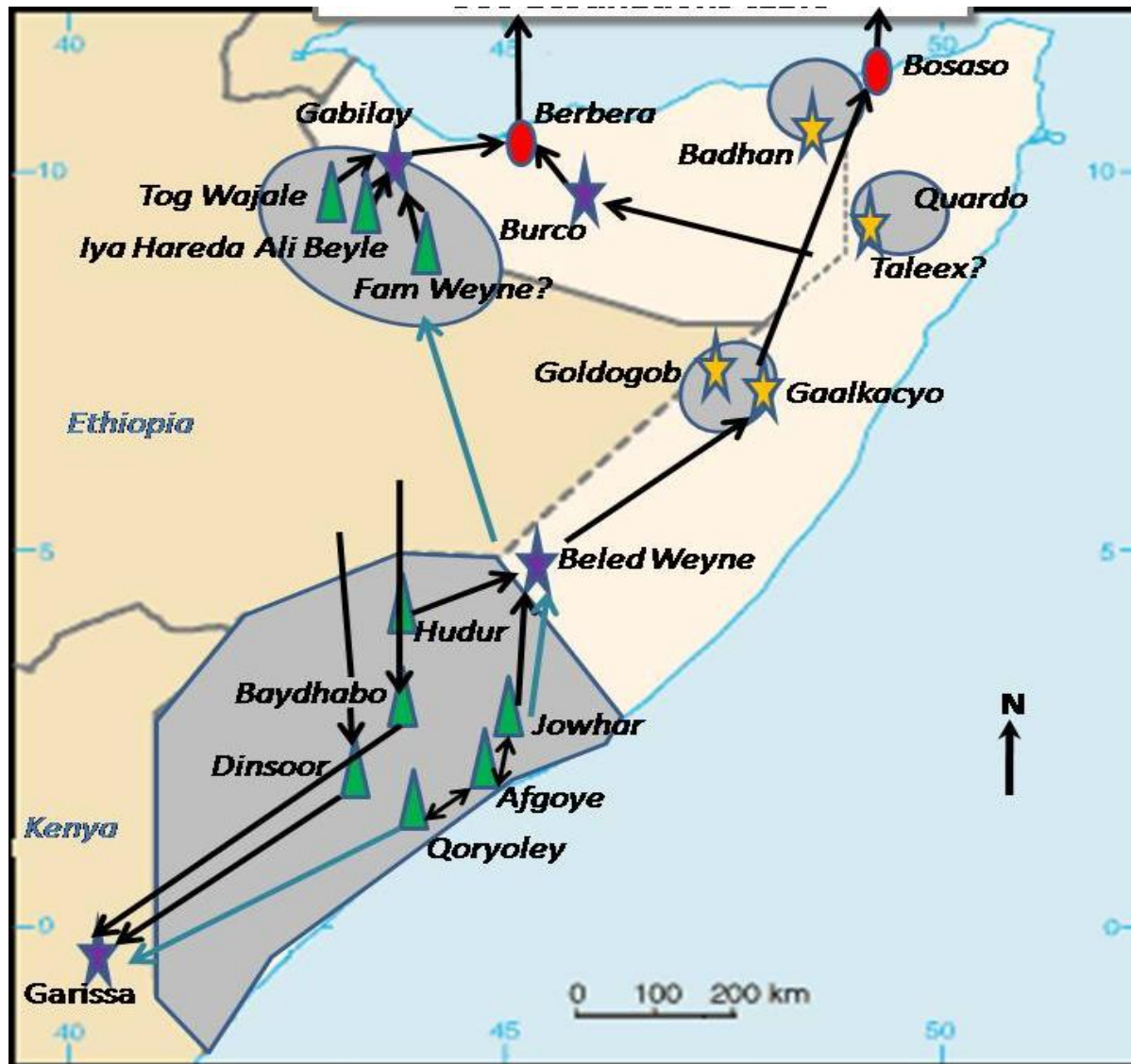


Main issues in the SE Asian trade

- ***animal disease dispersal***
- ***welfare issues have not been investigated***

East Africa – Middle East trade

- ***Sources:- Ethiopia, Somalia, Kenya***
- ***Demand in the Middle East - Egypt, Saudi Arabia, Yemen, Kuwait***
- ***Foot & Mouth Disease - 2006***
- ***Rift Valley Fever***
- ***FAO interested in supporting the trade***
- ***Welfare issues have not been investigated***



Port

Inspection point

Production cluster

Market

Proposed
Inspection point

Direction of travel
(blue if on foot)

Issues in the Live Cattle export trade

- ***Long distances***
 - ***dehydration***
 - ***metabolic depletion***
- ***Injuries***
- ***Suitability of particular breeds or genotypes***
- ***Disease transmission***
- ***Marketing and slaughter conditions in the importing countries***

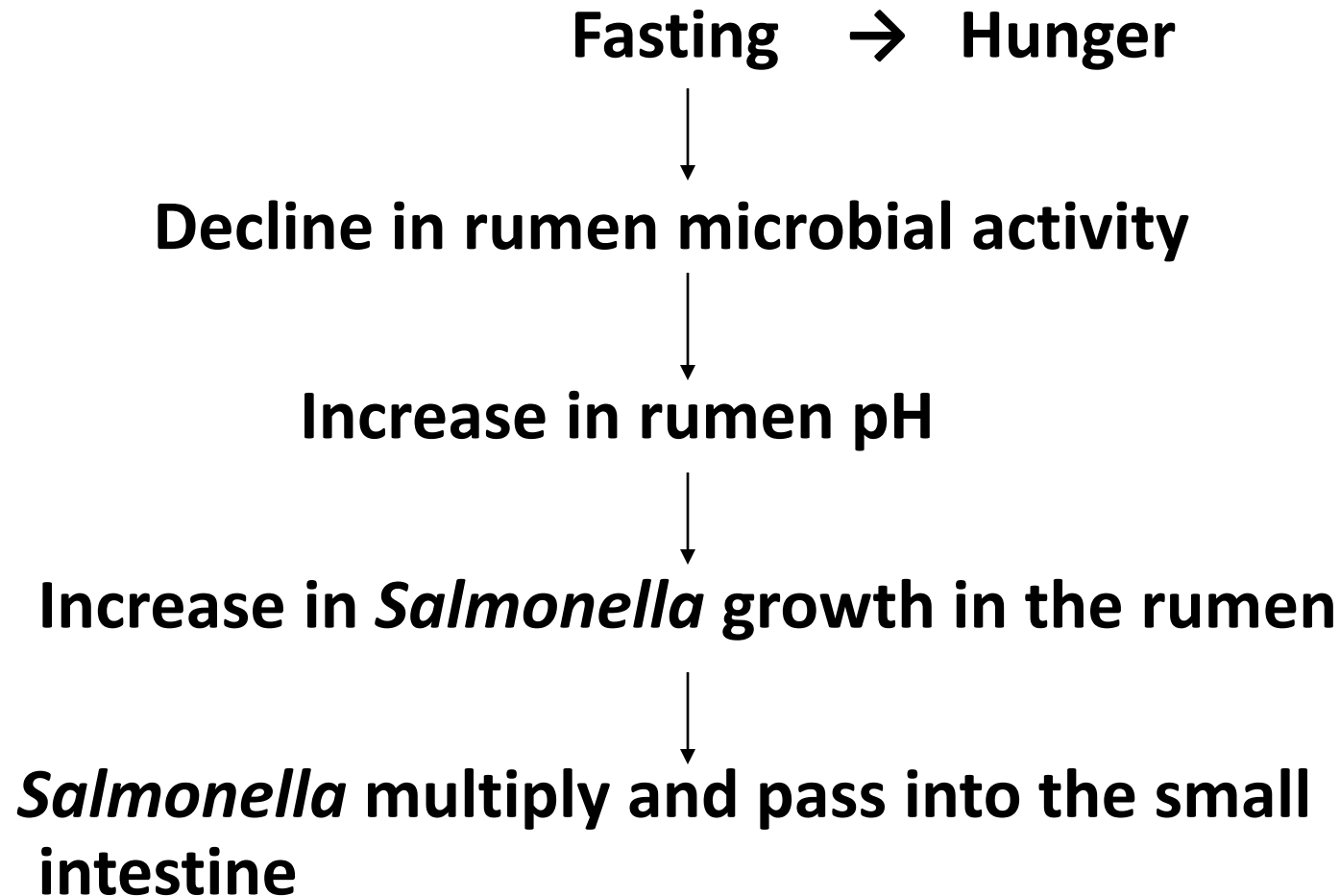
Sheep export Australia & Middle East trade

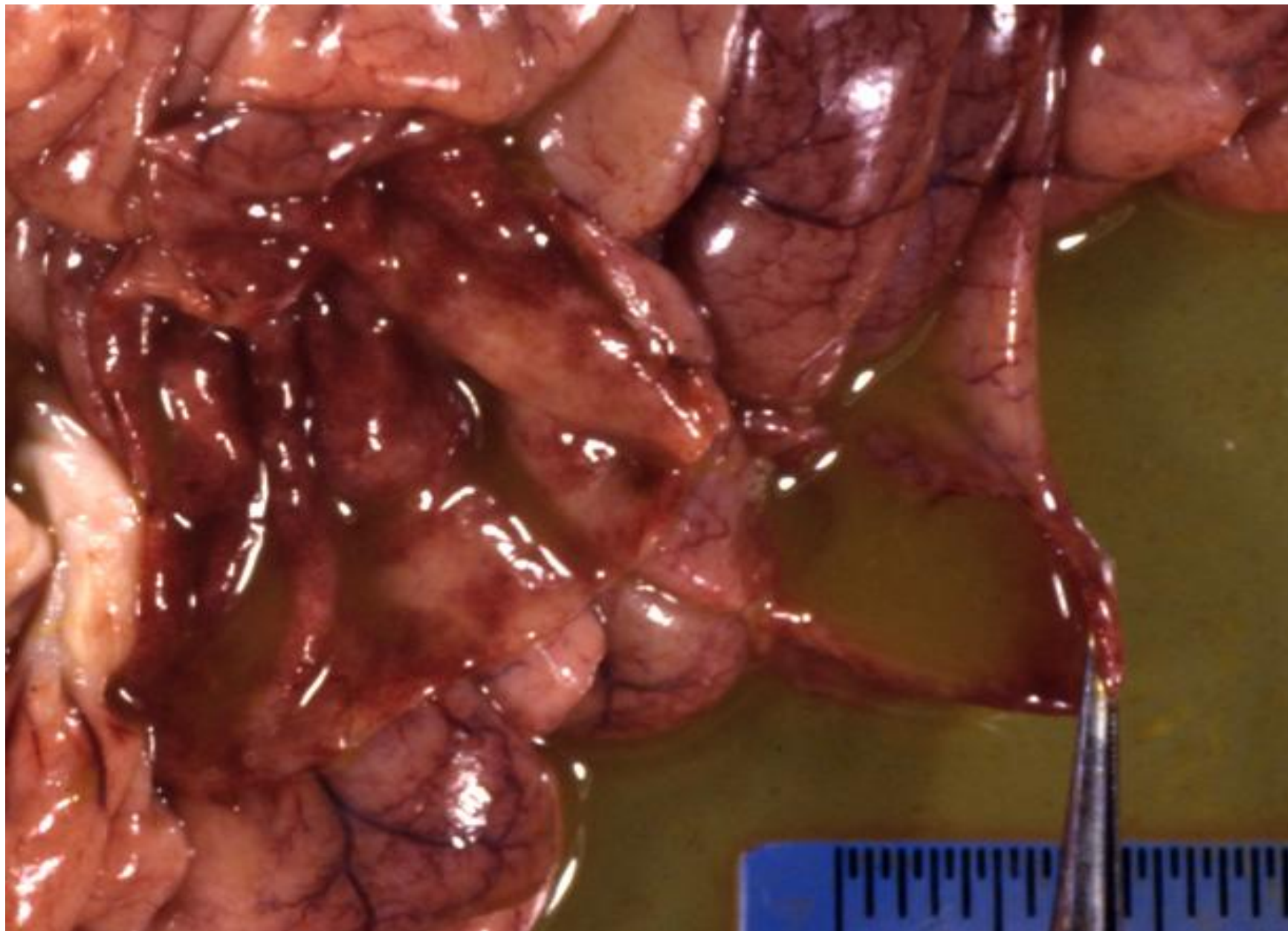


Sheep trade between Australia & Middle East

- ***Haj – seasonal, involving large numbers of animals***
- ***3 to 4 week journeys***
- ***typically 40,000 sheep per ship, but can be up to 60,000***
- ***mortality due to***
 - inanition***
 - salmonellosis***
 - pneumonia***
 - loading injuries***
 - smothering***
 - fires***
- ***veterinary supervision***
- ***heat stress during off-loading can be a problem***
- ***scabby mouth***

Preslaughter fasting and Salmonellosis





ADVISING POLICY MAKERS ON LIVE EXPORT

Brazil has recently received adverse publicity about live cattle export to Lebanon. The criticisms were about general “animal cruelty” rather than any specific welfare problems.

The Government has put out a call for Discussion papers to help Brazil develop a policy. You are interested in submitting a proposal in response to the call.

What will be the main points in your proposal ?

Four general approaches

STRATEGIC Identify risks and list all the possible risk management approaches

RESEARCH Evaluate the Animal Welfare issues in the live cattle export trade

ETHICAL Provide the Government with advice on the ethical issues and on conflict resolution

AUDITING Suggest the critical control points in welfare monitoring, auditing and enforcement

Please ask us for guidance if needed